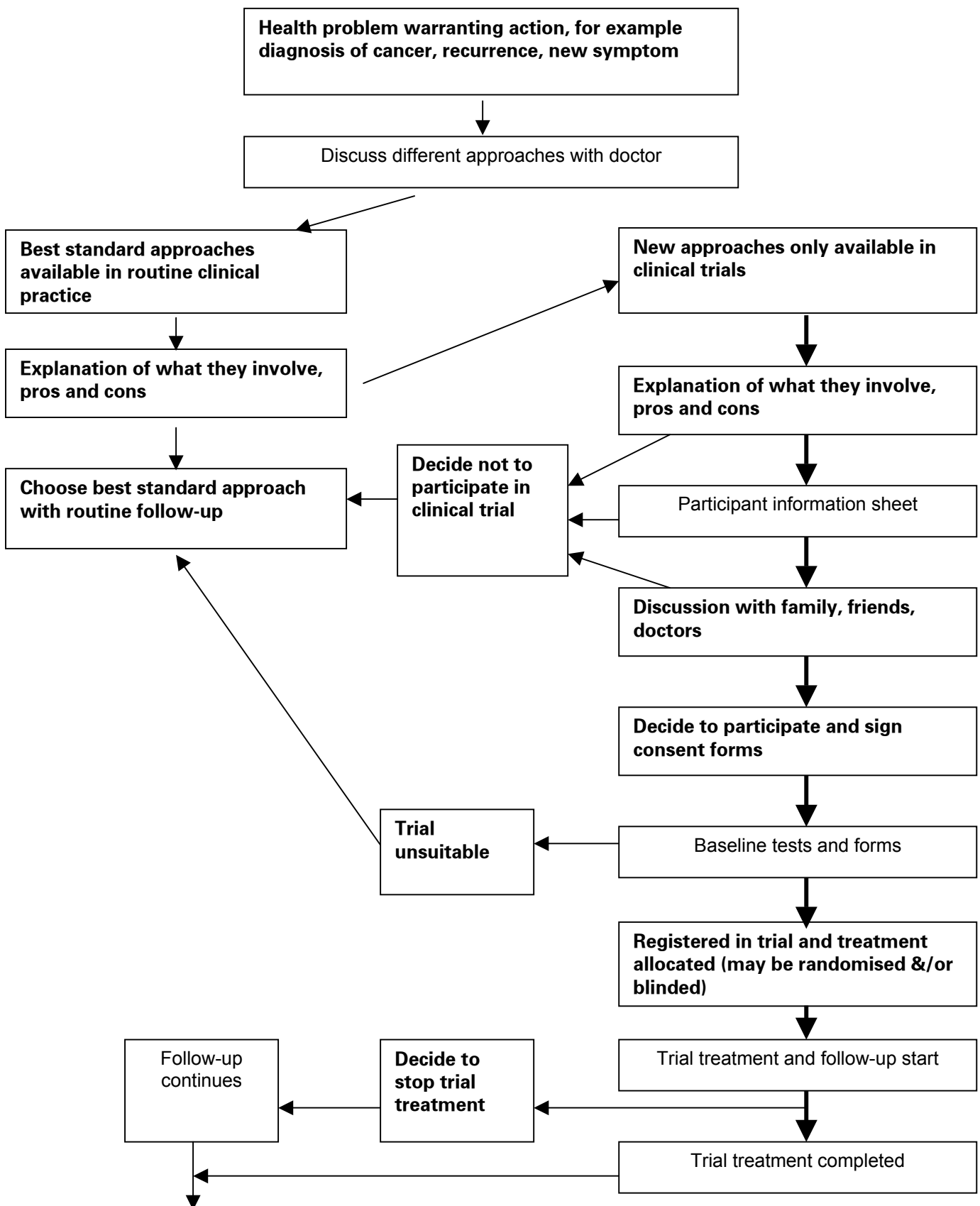


Joining a clinical trial: summary

The aim of this chart is to show people affected by cancer simply, clearly and briefly how they might get involved in a trial and what happens.



Follow-up often continues long after the last patient joins. It is often months or even years before the results can be analysed and reported in journals. All standard treatments are available to people who have completed or stopped their trial treatment. Sometimes, there are other trials to consider.