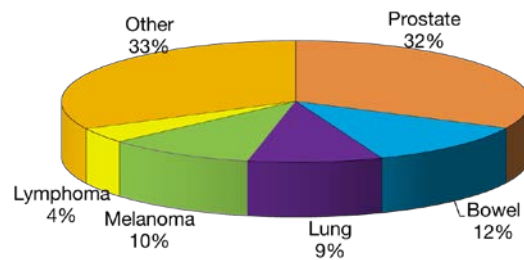


## Prostate Cancer in Western Australia, 2009

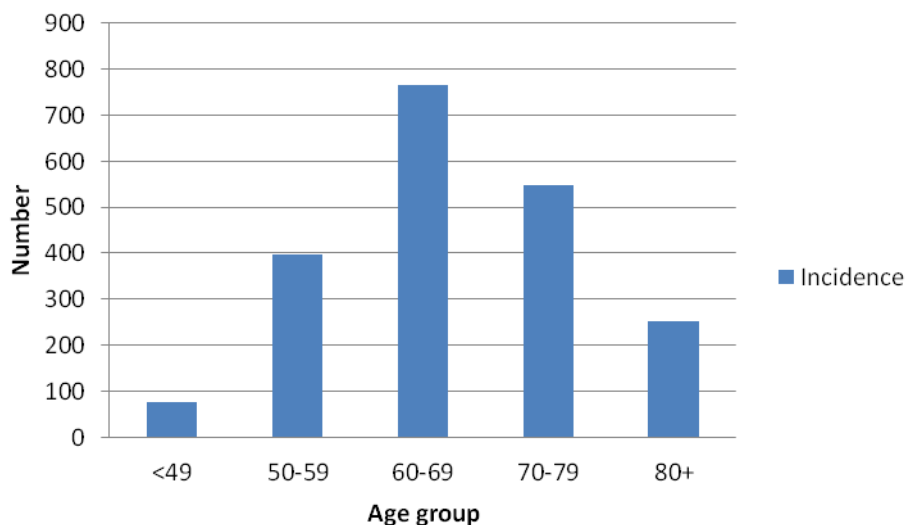
- Prostate cancer is the most common cancer diagnosed in men in Western Australia, accounting for 32 per cent of cases in 2009.
- Prostate cancer is the second most common cause of cancer deaths in men, after lung cancer.

Cancer Incidence in Western Australian Men, 2009



- It is predominantly a disease of older men with 60 per cent of cases occurring in men over 65 years of age.
- One in seven men would be expected to have a diagnosis of prostate cancer before the age of 75 and 1 in 115 men could be expected to die from prostate cancer before age 75.
- The number of new cases each year is increasing due largely to early detection through increased investigations.
- The steep increase in the number of prostate cancer cases between 1990 and 1996 can be explained by the increase in testing during this period.
- Mortality rates from prostate cancer remain steady.
- The cause of prostate cancer is not known and no clear prevention strategy exists to reduce the risk of developing this cancer.
- There is currently no agreed screening program for well men (those without symptoms).

Prostate cancer incidence by age, Western Australia 2009

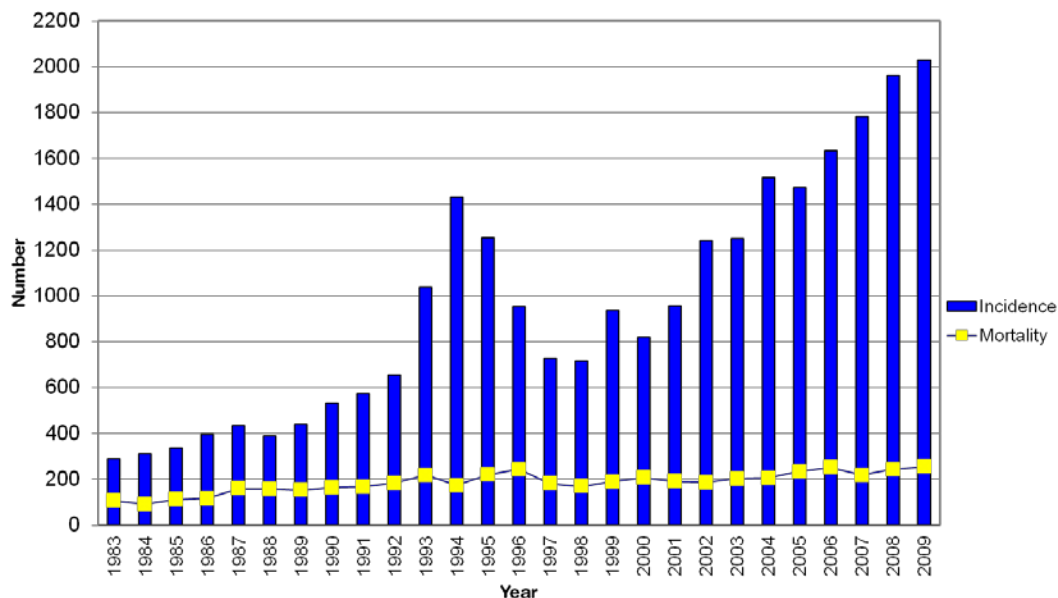


### Number of cases Western Australia 1995–2009\*

	1995	1996	1997	1998	1999	2000	2001	2002	2003	2004	2005	2006	2007	2008	2009
<b>Incidence</b>	1253	952	730	717	937	821	956	1241	1252	1518	1471	1635	1781	1963	2030
<b>Mortality</b>	219	243	181	169	189	207	191	186	202	206	234	251	218	244	255

\*Total number of cases recorded by the Cancer Registry in one year

### Prostate cancer incidence and mortality Western Australia 1983-2009



### Age Standardised Rates (ASR) Western Australia 1995–2009\*

	1995	1996	1997	1998	1999	2000	2001	2002	2003	2004	2005	2006	2007	2008	2009
<b>Incidence ASR</b>	121.4	89.4	64.5	61.8	77.7	65.4	74.8	94.8	91.6	108.5	100.5	107.7	114.1	121.3	121.4
<b>Mortality ASR</b>	19.0	19.9	14.2	12.9	13.6	14.4	12.5	11.7	12.4	12.1	13.4	13.2	11.5	12.2	12.1

\*Number of cases per 100,000 persons, adjusted for age (World 1960 population standard)

### Prostate cancer age standardized (ASR) incidence and mortality Western Australia 1983-2009

