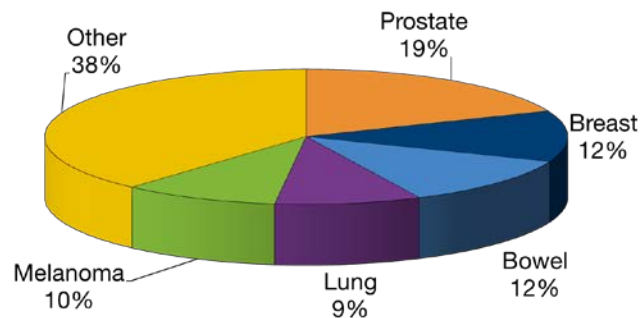


Bowel Cancer in Western Australia, 2009

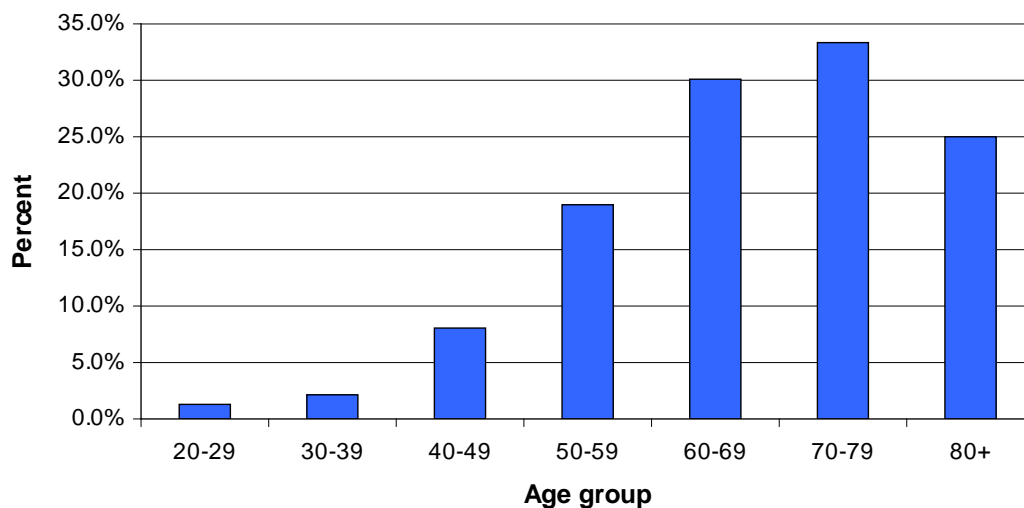
- The terms bowel cancer and colorectal cancer are often used interchangeably. Bowel cancer refers to cancers that occur in the colon or rectum.
- Bowel cancer is the third most common cancer diagnosed in Western Australia, accounting for 12 per cent of all cancer cases. It is the most common cancer that is not specific to men or women (apart from non-melanoma skin cancers)

Cancer Incidence, Western Australia, 2009



- Bowel cancer is the second most common cause of cancer death in West Australians, after lung cancer.
- More than 74 per cent of bowel cancer cases are diagnosed in people aged over 60.

Bowel cancer incidence by age, Western Australia 2009



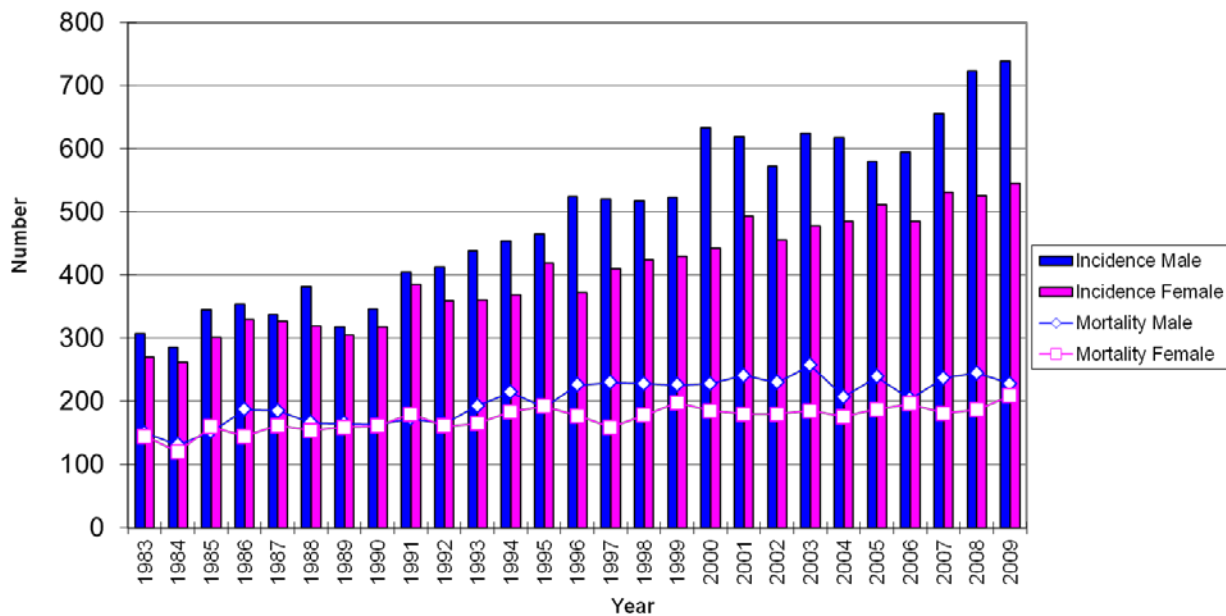
- Deaths from bowel cancer are concentrated in the 60+ age group, with 84% of male and 81% of female deaths from colorectal cancer occurring after this age.
- Mortality rates have remained steady, but are considered high because this cancer has a good prognosis when found early.

Number of cases Western Australia 1997-2009*

		1997	1998	1999	2000	2001	2002	2003	2004	2005	2006	2007	2008	2009
Incidence	Male	520	518	522	633	616	571	624	617	577	594	655	723	739
	Female	410	425	430	441	493	455	477	483	507	486	531	526	545
	Total	930	943	952	1074	1109	1026	1101	1100	1084	1080	1186	1249	1284
Mortality	Male	230	228	226	228	241	230	257	207	238	204	237	245	228
	Female	159	178	198	185	180	180	185	176	188	196	181	187	209
	Total	389	406	424	413	394	410	442	383	426	400	418	432	437

*Total number of cases recorded by the Cancer Registry in one year

Bowel cancer incidence and mortality Western Australia 1983-2009



Age Standardised Rates (ASR) Western Australia 1997-2009*

		1997	1998	1999	2000	2001	2002	2003	2004	2005	2006	2007	2008	2009
ASR Incidence	Male	46.4	44.7	43.4	51.1	47.4	41.9	45.0	42.7	39.1	39.3	40.6	44.0	43.2
	Female	31.5	31.8	29.7	30.0	31.1	28.2	29.0	29.5	29.5	27.5	30.3	27.6	28.8
ASR Mortality	Male	20.5	19.4	18.2	17.9	18.2	16.2	17.5	14.0	15.4	12.5	13.8	13.7	12.5
	Female	10.7	11.4	12.5	12.0	10.4	10.7	9.6	9.1	8.5	10.0	8.8	8.9	10.1

*Number of cases per 100,000 persons, adjusted for age (World 1960 population standard)

Bowel cancer age standardized (ASR) incidence and mortality Western Australia 1983-2009

