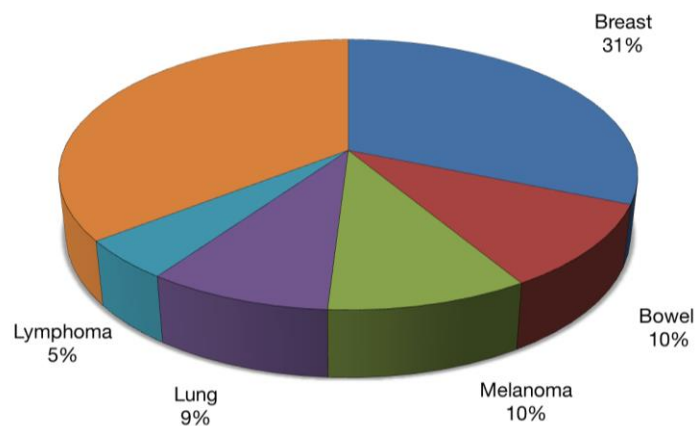


Western Australian Cancer Statistics, 2014 Breast cancer

- Breast cancer remains the most commonly diagnosed cancer and the second highest cause of cancer death among women in Western Australia.
- In Western Australia, the chance of being diagnosed with breast cancer before the age of 75 is one in ten and the chance of dying is one in 85.

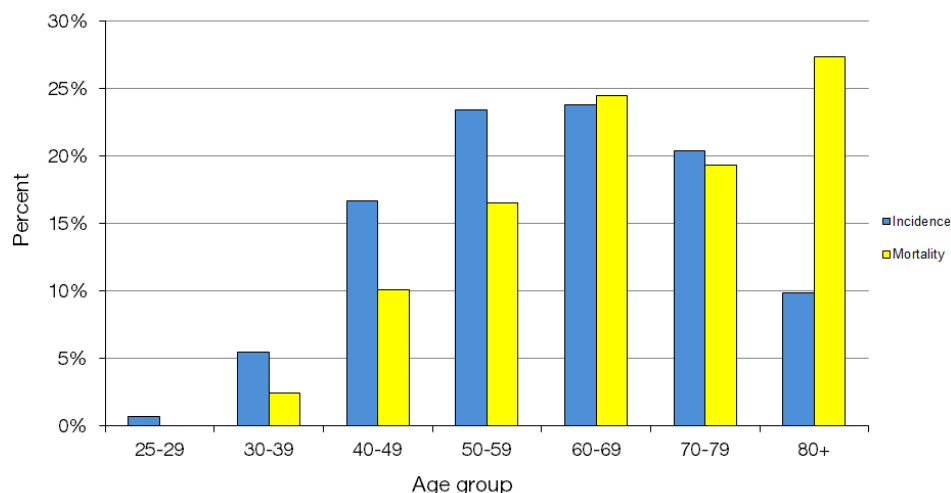
Cancer incidence in Western Australian women, 2014

(excluding non-melanoma skin cancer)



- The steady increase in the number of breast cancer cases is likely to be due to the increased population size and an ageing population.
- Age standardised rates for new cases of breast cancer have increased from 60 per 100,000 to over 90 per 100,000 from 1983 to 2014. This is most likely to be the result of systematic breast cancer screening program (BreastScreen which started in 1991) that has led to higher rates of breast cancer identification.
- Diagnosis of breast cancer increases as women age, with 6.3 per cent of cases diagnosed in women younger than 40, 16.6 per cent of cases in women aged 40-59 and 77.1 per cent of cases in women over the age of 50 in WA in 2014.
- The number of breast cancer deaths has increased slightly between 1983 and 2014. However age standardised rates show a decline in deaths, suggesting breast cancers are more commonly found when they are small and treatment is likely to be successful, coupled with improvements in breast cancer treatment itself.
- Breast cancer does occur in males, but is very rare. In 2014 there were 14 cases diagnosed in males, and less than 5 deaths in Western Australia.

Female breast cancer incidence and mortality by age: Western Australia 2014

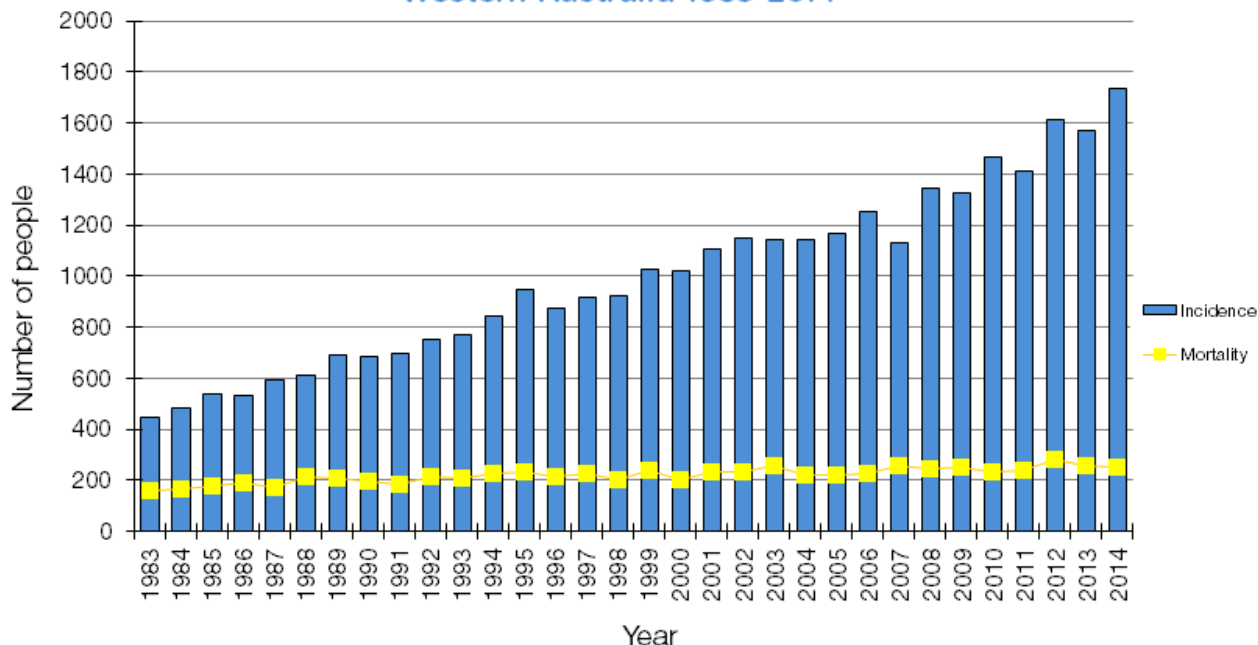


Number of cases in women in Western Australia 1999-2014*

	1999	2000	2001	2002	2003	2004	2005	2006	2007	2008	2009	2010	2011	2012	2013	2014
Incidence	1025	1023	1107	1148	1141	1146	1166	1251	1129	1344	1327	1468	1412	1616	1571	1737
Mortality	239	205	233	231	256	224	224	230	255	245	249	234	239	284	256	249

*Total number of cases recorded by the Cancer Registry in one year

Breast cancer incidence and mortality: Western Australia 1983-2014



Age standardised rates (ASR) in women in Western Australia 1999-2014*

	1999	2000	2001	2002	2003	2004	2005	2006	2007	2008	2009	2010	2011	2012	2013	2014
ASR Incidence	85.3	82.4	87.1	87.4	84.6	82.5	82.2	85.7	74.3	86.1	82	89.2	82.6	91.8	86.9	92.6
ASR Mortality	17.8	14.1	15.8	16	16.3	14.3	13.8	14.4	14.5	13.9	13.7	12.2	12	13.4	12.2	11.2

*Number of cases per 100,000 persons, adjusted for age (World 1960 population standard)

Breast cancer age standardised (ASR) incidence and mortality: Western Australia 1983-2014

