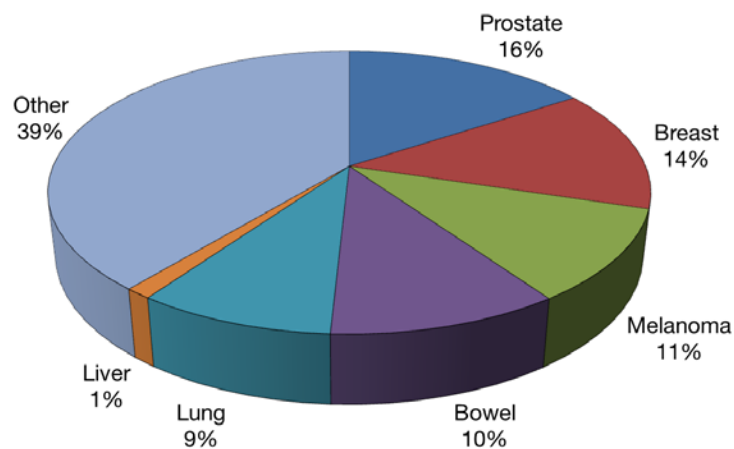


Western Australian Cancer Statistics, 2014

Liver cancer

- Liver cancer is the 15th most common cancer in men and 21st in women in Western Australia.
- 107 men and 43 women were diagnosed in 2014; it is a relatively rare cancer, accounting for around one per cent of all cancer cases.

Cancer incidence in Western Australians, 2014
(excluding non-melanoma skin cancer)



- Although incidence is low, the mortality rate for liver cancer is quite high. In 2014, there were 126 deaths. This accounts for around 3 per cent of all cancer deaths.
- The number of liver cancer cases and deaths have both increased considerably since 1984.
- Liver cancer is much more common in men than women, and more men die from liver cancer than women.
- Men have a 1 in 156 chance of being diagnosed with liver cancer and a 1 in 190 chance of dying of this cancer, for women the chance of being diagnosed is 1 in 428 and the chance of dying is 1 in 583.
- Liver cancer diagnoses peak among the 55-64 year age group.
- Liver cancer is the fourth most common cause of cancer death in males aged 15-39, however cancer deaths in this age group is relatively rare and the actual number of liver cancer deaths is very low (less than five).
- Age standardised mortality rates have more than doubled from 1.8 per 100,000 to 4.4 per 100,000 in males between 1984 and 2014. In women the increase has been smaller, but also doubled, increasing from 0.9 per 100,000 to 1.8 per 100,000.
- Long term (chronic) infection with hepatitis B virus causes 60-80% of primary liver cancer cases.
- Liver cancer is the fastest increasing cause of cancer death in Australia.

Male and female liver cancer incidence and mortality: Western Australia 2014

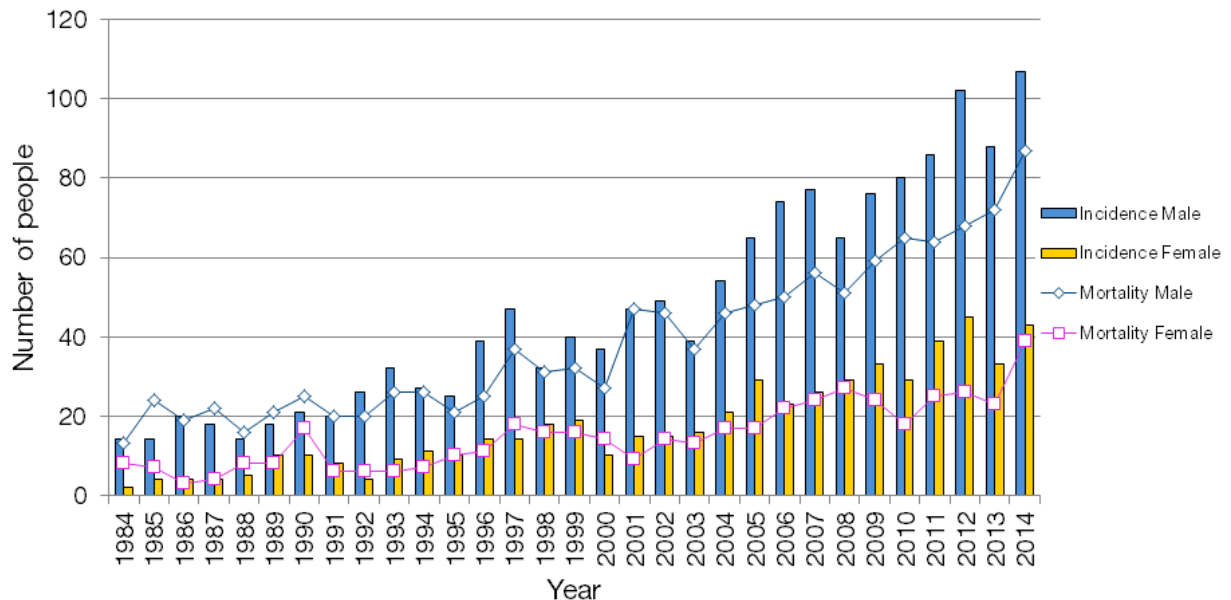
		Total
Incidence	Male	107
	Female	43
Mortality	Male	87
	Female	39

Number of liver cancer cases in Western Australia 2000–2014*

		2000	2001	2002	2003	2004	2005	2006	2007	2008	2009	2010	2011	2012	2013	2014
Incidence	Male	37	47	49	39	54	65	74	77	65	76	80	86	102	88	107
	Female	10	15	15	16	21	29	23	26	29	33	29	39	45	33	43
	Persons	47	62	64	55	75	94	97	103	94	109	109	125	147	121	150
Mortality	Male	27	47	46	37	46	48	50	56	51	59	65	64	68	72	87
	Female	14	9	14	13	17	17	22	24	27	24	18	25	26	23	39
	Persons	41	56	60	50	63	65	72	80	78	83	83	94	94	95	126

*Total number of cases recorded by the Cancer Registry in one year

Liver cancer incidence and mortality: Western Australia 1984-2014



Age standardised rates (ASR) in Western Australia 2000-2014*

		2000	2001	2002	2003	2004	2005	2006	2007	2008	2009	2010	2011	2012	2013	2014
ASR Incidence	Male	3	3.7	3.7	3.1	3.8	4.4	4.9	5.2	4.1	4.7	4.6	4.7	5.3	4.8	5.5
	Female	0.6	1.3	0.9	0.9	1.2	1.8	1.3	1.3	1.7	1.9	1.5	2.2	2	1.8	2
ASR Mortality	Male	2.1	3.8	3.4	2.6	3.2	3.3	3.2	3.4	2.9	3.5	3.6	3.5	3.4	3.5	4.4
	Female	1	0.6	0.8	0.6	0.8	0.9	1.2	1.3	1.4	1.1	1	1.2	1.1	1.1	1.8

*Number of cases per 100,000 persons, adjusted for age (World 1960 population standard)

Liver cancer age standardised (ASR) incidence and mortality: Western Australia 1984-2014

