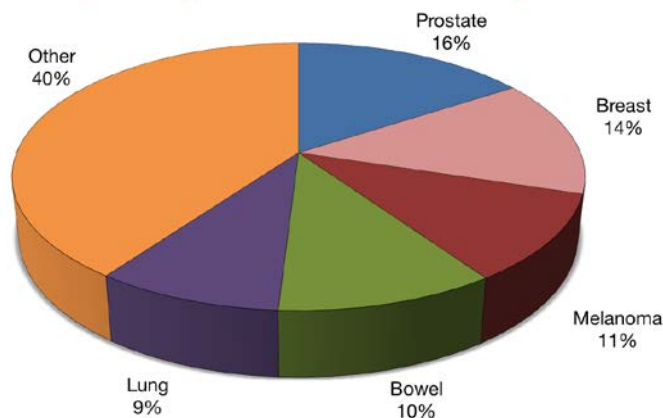


Western Australian Cancer Statistics, 2014 Lung cancer

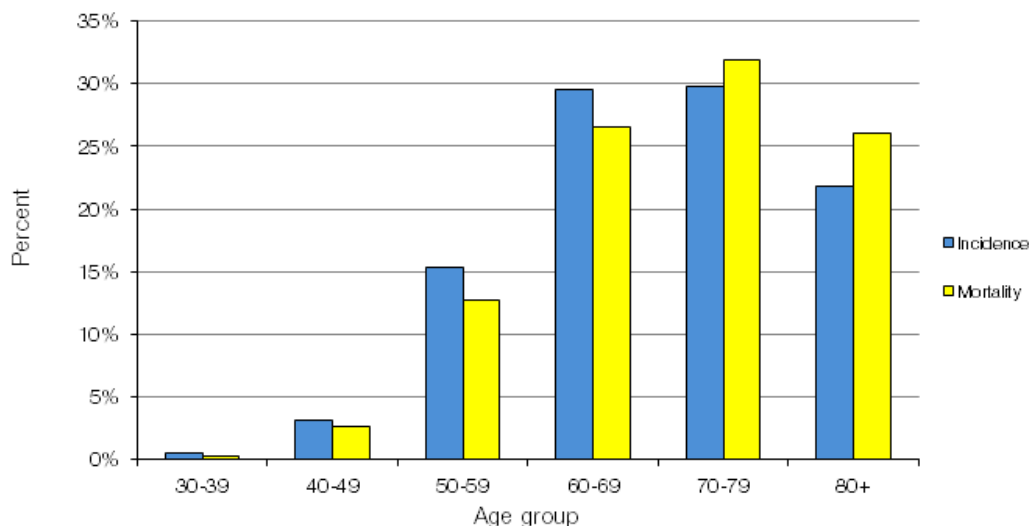
- Lung cancer remains the fifth most common cancer in Western Australia; yet it's the most common cause of cancer death.
- There are two main types of lung cancer; non-small cell (the most common type) and small cell lung cancer.

Cancer incidence in Western Australians, 2014
(excluding non-melanoma skin cancer)



- Current patterns of lung cancer incidence (new cases) reflect smoking behaviour 20 or more years ago.
- When adjusted for the increase in the size and ageing of the population, there has been a steady decline in the rate of new cases and deaths from lung cancer among men and a continuing increase in the rate of new cases among women.
- Overall the rates of lung cancer are still higher for men.
- In general lung cancer has a poor prognosis.
- The most common cause of lung cancer is smoking. Other causes include: second-hand smoke, asbestos, radiation, arsenic and other known carcinogenic chemicals.

**Lung cancer incidence by age:
Western Australia 2014**



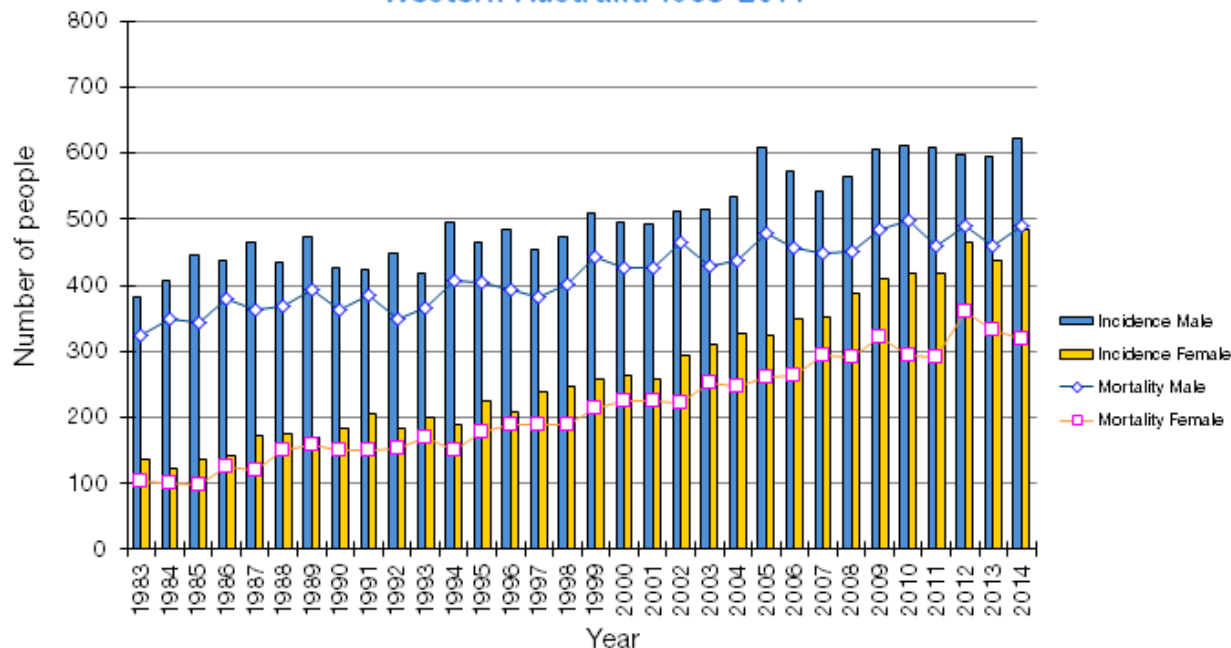
*Mortality rates for the 30-39 and 40-49 age groups are approximate values as the Western Australian Cancer Registry does not publish exact values less than 5.

Number of lung cancer cases in Western Australia 2000-2014*

		2000	2001	2002	2003	2004	2005	2006	2007	2008	2009	2010	2011	2012	2013	2014
Incidence	Male	494	492	539	519	535	609	573	542	564	605	611	610	598	595	623
	Female	263	258	307	321	328	325	349	353	389	409	418	417	465	437	484
	Persons	757	750	846	840	864	934	922	895	953	1,014	1,029	1,027	1,063	1,032	1,107
Mortality	Male	427	427	468	429	436	480	458	448	450	483	498	460	490	459	491
	Female	224	224	221	252	247	261	262	294	291	322	293	292	361	333	319
	Persons	651	651	689	681	683	741	720	742	741	805	791	752	851	792	810

*Total number of cases recorded by the cancer registry in one year

Lung cancer incidence and mortality: Western Australia 1983-2014



Age standardised rates (ASR) in Western Australia 2000-2014*

		2000	2001	2002	2003	2004	2005	2006	2007	2008	2009	2010	2011	2012	2013	2014
ASR Incidence	Male	39.5	37.2	39.6	35.6	35.1	38.9	36.2	32.8	33.1	34.3	32.3	31.6	30.6	28.6	29.5
	Female	18.5	17.3	19.8	19.9	20.3	19.3	20	19.2	20.7	21.1	21.6	20.6	22.1	20.1	22.1
ASR Mortality	Male	32.6	31.9	33.4	29.4	28.1	29.7	27.9	26.8	26.2	26.8	26.2	23.3	23.6	21.3	22.5
	Female	15.1	12.7	13.4	15.4	14.5	15	14.1	15.1	14.1	16.3	13.4	13.5	16.3	14.4	13.9

*Number of cases per 100,000 persons, adjusted for age (World 1960 population standard)

Lung cancer age standardised (ASR) incidence and mortality: Western Australia 1983-2014

